

C-RAIL-WALL-PLATE Wall Mounting Bracket for Hook A

The C-RAIL-WALL-PLATE is a pair of stainless steel products, designed specifically to fix C-RAIL-HOOK-A pole hook on the wall.

It is normally used when the C-Rail cabling system needs to be terminated on the wall of a customer house.

The product includes two parts which can be slid into each other to fix the relevant part of C-RAIL-HOOK-A.

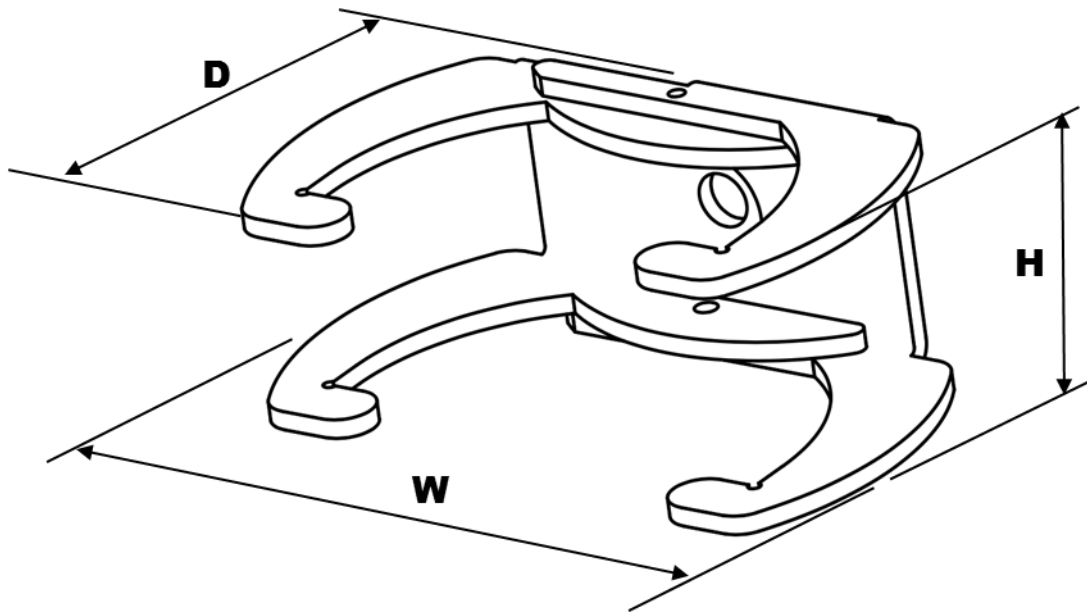
Wall installation of the product requests a standard screw nail / dowel combination, where the screw shaft diameter must be 8 mm. The screw length must be carefully selected according to the construction (material) of the wall and the thickness of thermal isolation if it exists.

The 3 mm thick stainless steel material ensures the necessary strength for the construction, while the relatively large (12 cm²) contact surface makes installation safe even if the more sensitive thermal sealing covers the customer's house.

The installation can be completed in three simple steps.

- drill the hole into the wall and fix the first part of the product by the relevant screw
- insert the sliding part of the product into the fixed one and slide it on half way
- insert the C-RAIL-HOOK-A into the frame, slide it completely and fix them by the additional 3mm wide screw at the top.

PRODUCTDETAILS



Product Information

Net weight	570 gr / pc
Material	Stainless steel

Sizes

W: 100 mm

D: 62 mm

H: 41 mm

Ordering information

Ordering description	C-RAIL-WALL-PLATE
Packaging quantity	1 pc

MOQ (Minimum ordering quantity) 50 pc